

## PRODUCT DATA SHEET

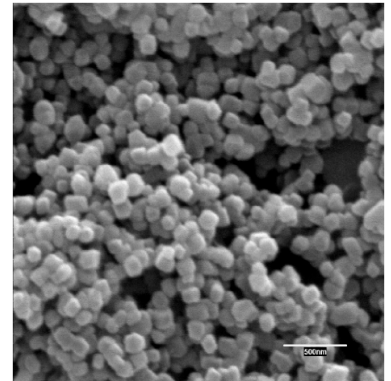
### CALPREC PR

#### 1. DESCRIPTION

Calprec PR is a ultrafine coated precipitated calcium carbonate. Its main properties are: high purity, narrow crystal size distribution in the nanometric range, and organic surface treatment.

#### 2. USES

- Rheology modifier filler in sealants.
- Processing aid and reinforcer filler in rigid PVC.
- Mineral additive in a wide range of plastic and elastomeric applications.



#### 3. CHARACTERISTICS

| DETERMINATION   | PROCEDURE                 | STANDARD SPECIFICATION | TYPICAL DATA | UNIT              |
|---|---------------------------|------------------------|--------------|-------------------|
| Crystal form  | FTIR spectrometer         | Calcite                | Calcite      | -                 |
| Calcium content (as CaCO <sub>3</sub> before coating) | Volumetry                 | > 98                   | 98,5         | %                 |
| Mean particle diameter                                | Air permeability          | 0,03 - 0,07            | 0,05         | µm                |
| Moisture content                                      | Loss on drying at 110°C   | < 0,6                  | 0,3          | %                 |
| North fineness  | North fineness gauge      | < 60                   | 10           | µm                |
| Rheological properties:                               | Mettler rheometer         |                        |              |                   |
| Yield value   |                           | 185 - 215              | 200          | Pa                |
| Viscosity   |                           | 0,45 - 0,65            | 0,55         | Pa.s              |
| Brightness (relative to MgO)                          | Elrepho spectrophotometer | > 89                   | 93           | %                 |
| Organic coating content                               | Ether extraction          | 2,4 - 3,2              | 2,8          | %                 |
| Free flowing density                                  | ISO 903                   | 0,30 - 0,40            | 0,35         | g/cm <sup>3</sup> |

#### 4. PACKAGING

On pallets (42 bags x 25 kg) or Bulk